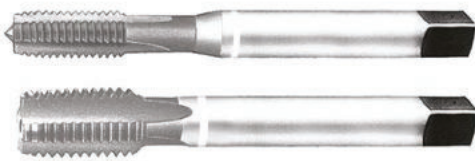
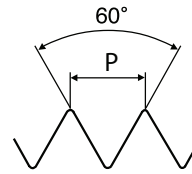
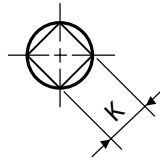
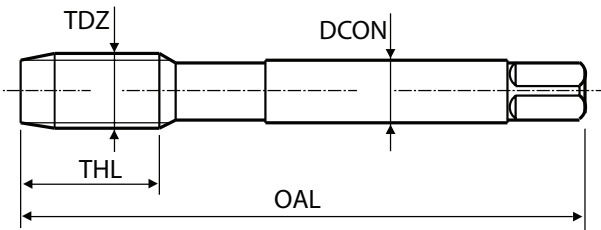


M ISO metric coarse thread DIN 13

Gwint metryczny zwykły wg ISO DIN 13

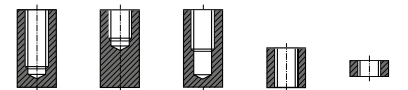


DIN371

DIN376

CARBIDE TAPS

GWINTOWNIKI WĘGLIKOWE



1 2 3 4 5

3 x D1 1,5-2 x D1 3 x D1 3 x D1 1,5-2 x D1

Thread tolerance class - 6HX

Klasa tolerancji gwintu - 6HX

Material classification level 1 - GG - Grey Cast Iron

Poziom 1 klasyfikacji materiałowej - GG-Żeliwo szare

Threading chamfer type - c

Typ nakroju gwintownika - c

TDZ	P	EDP Nr	THL	OAL	DCON	K	TD
M3	∅ 0.5	SCT011206	11	56	3.5	2.7	2.5
M3.5	∅ 0.6	SCT011226	12	56	4	3	2.9
M4	∅ 0.7	SCT011246	13	63	4.5	3.4	3.3
M5	∅ 0.8	SCT011286	15	70	6	4.9	4.2
M6	∅ 1	SCT011316	17	80	6	4.9	5
M8	∅ 1.25	SCT011366	20	90	8	6.2	6.8
M10	∅ 1.5	SCT011426	22	100	10	8	8.5
M12	∅ 1.75	SCT011506	24	110	9	7	10.2
M14	∅ 2	SCT011546	26	110	11	9	12
M16	∅ 2	SCT011606	27	110	12	9	14
M18	∅ 2.5	SCT011656	30	125	14	11	15.5
M20	∅ 2.5	SCT011706	32	140	16	12	17.5

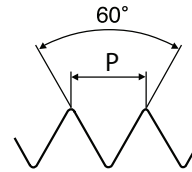
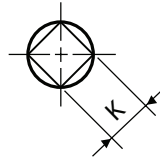
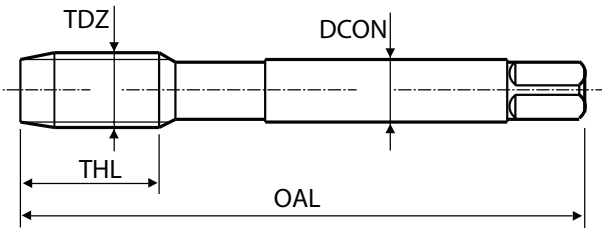
DIN 371 (M2-M10)

DIN 376 (M11-M20)

GG Cast <500 N/mm ²	GG Cast <1000 N/mm ²	Cu Alloy Short	Al Si > 10%	Plastic FRP
-----------------------------------	------------------------------------	-------------------	----------------	----------------

M ISO metric coarse thread DIN 13

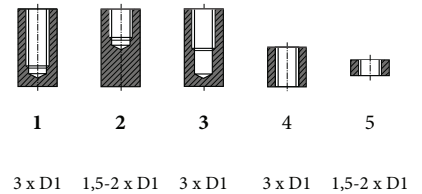
Gwint metryczny zwykły wg ISO DIN 13



DIN371

DIN376

CARBIDE TAPS GWINTOWNIKI WĘGLIKOWE



Thread tolerance class - 6HX

Klasa tolerancji gwintu - 6HX

Material classification level 1 - High alloyed steels $R_m > 1,200 \text{ N/mm}^2$

Poziom 1 klasyfikacji materiałowej - Stale wysokostopowe $R_m > 1,200 \text{ N/mm}^2$

Threading chamfer type - c/d

Typ nakroju gwintownika - c/d

TiCN

TDZ	P	EDP Nr		THL	OAL	DCON	K	TD	
		C	D						
M3	∅	0.5	SCT021206	SCT031206	11	56	3.5	2.7	2.5
M4	∅	0.7	SCT021246	SCT031246	13	63	4.5	3.4	3.3
M5	∅	0.8	SCT021286	SCT031286	15	70	6	4.9	4.2
M6	∅	1	SCT021316	SCT031316	17	80	6	4.9	5
M8	∅	1.25	SCT021366	SCT031366	20	90	8	6.2	6.8
M10	∅	1.5	SCT021426	SCT031426	21	100	10	8	8.5
M12	∅	1.75	SCT021506	SCT031506	24	110	9	7	10.2
M14	∅	2	SCT021546	SCT031546	26	110	11	9	12
M16	∅	2	SCT021606	SCT031606	27	110	12	9	14
M18	∅	2.5	SCT021656	SCT031656	30	125	14	11	15.5
M20	∅	2.5	SCT021706	SCT031706	32	140	16	12	17.5

DIN 371 (M2-M10)

DIN 376 (M11-M20)

St. Alloy <1200 N/mm ²	St. Alloy >1200 N/mm ²	INOX <1000 N/mm ²	Cu Alloy Short	Cu-Al-Fe <1500 N/mm ²	Plastic Thermoset	Plastic FRP
--------------------------------------	--------------------------------------	---------------------------------	-------------------	-------------------------------------	----------------------	----------------